

| | | | |
|-------------------------|--------------|---|-------------------|
| marantz® | | Date: 16-Mar-2005 | Model: ER2500 |
| | | Page: 1 / 3 | REF.NBR: MZ05-009 |
| SERVICE BULLETIN | | Subject: Sync problem with particular Video equipment. | |
| Level | Application: | | |
| ★ ★ | | See below | |
| | | Int.ref: | |

[PHENOMENON]

If the video equipment with which the coupling capacitor is not contained in the CVBS video output is connected to the ER2500, synchronous disorder will occur.

[SOLUTION]

The following 6pcs of parts are changed on the MAIN PCB
As for the details, Please see page2/3 and 3/3.

1. POS.NO **C531** CHIP ELECT. CAPACITOR (**100uF 16V**) is changed to (**33uF 16V**).
2. POS.NO **C537** CHIP ELECT. CAPACITOR (**100uF 16V**) is changed to (**33uF 16V**).
3. POS.NO - CARBON FILM FIXED RESISTOR (**75 OHM +-5% 1/6W**) is added.
4. POS.NO - CARBON FILM FIXED RESISTOR (**75 OHM +-5% 1/6W**) is added.
5. POS.NO **R525** CHIP RESISTOR (**75 OHM**) is removed.
6. POS.NO **R530** CHIP RESISTOR (**75 OHM**) is removed.

[NECESSARY PART]

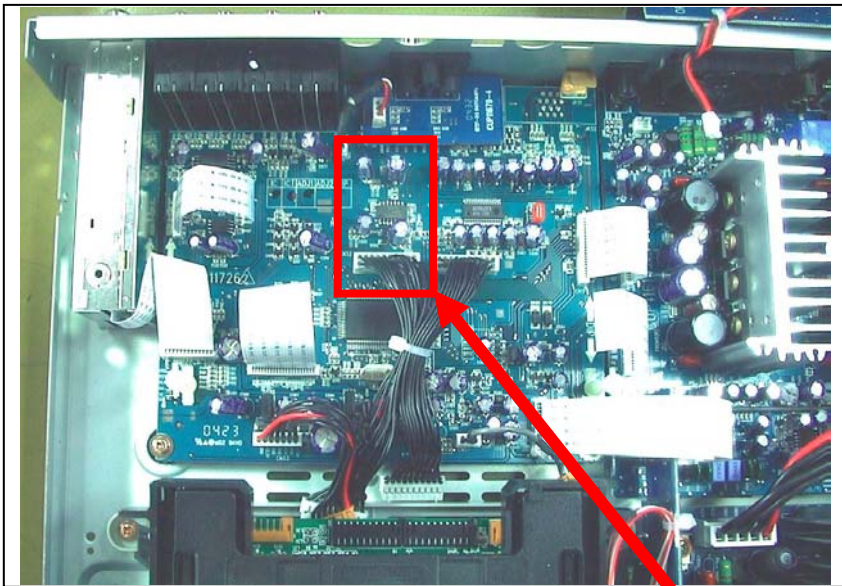
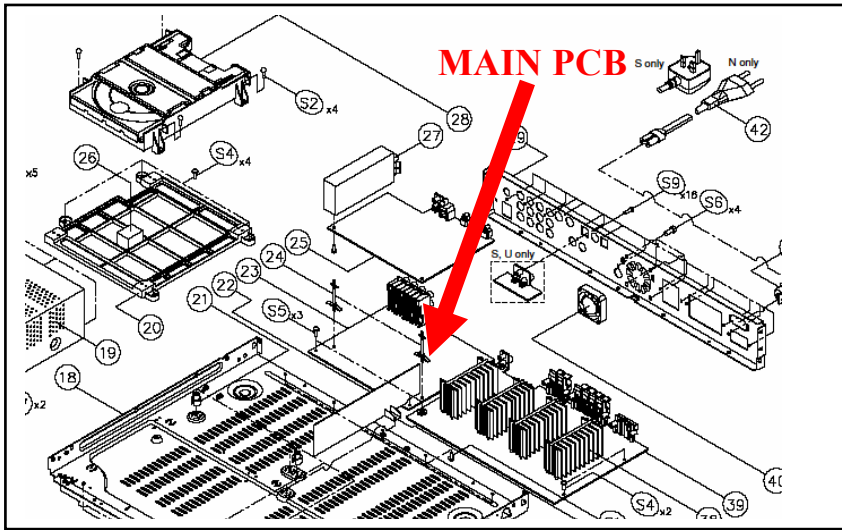
| OLD NEW | POS.NO | PART NO. (FOR EUR) | PART NO. (MJI) | PART NAME | DESCRIPTION | FACTORY CODE NO |
|--------------|--------------|-----------------------|-------------------|----------------------------------|---------------------|--------------------|
| OLD | C531 C537 | nsp | 00MOA10701620 | ELECT CAP. | 100uF 16V | HCEA1CH101T |
| NEW | C531 C537 | nsp | 00MOA33602520 | ELECT CAP. | 33uF 16V | - |
| NEW (Add) | - | nsp | 00MGD05750160 | CARBON FILM FIXED RESISTOR | 75 OHM +-5% 1/6W | - |

[REMARKS]

1. This problem apply to the following serial number.
 - 1) **ER2500/N1S apply to MZ01xxxx002200 and earlier.**
This improvement has been done in the production serial number **MZ01xxxx002201 and after.**
 - 2) **ER2500/U1S apply to MZ01xxxx000400 and earlier.**
This improvement has been done in the production serial number **MZ010504000401 and after.**
 - 3) **ER2500/S1S apply to MZ01xxxx000080 and earlier.**
This improvement has been done in the production serial number **MZ01xxxx000081 and after.**

Approved by **N.Sensui**

Written by **S.NAGAO**

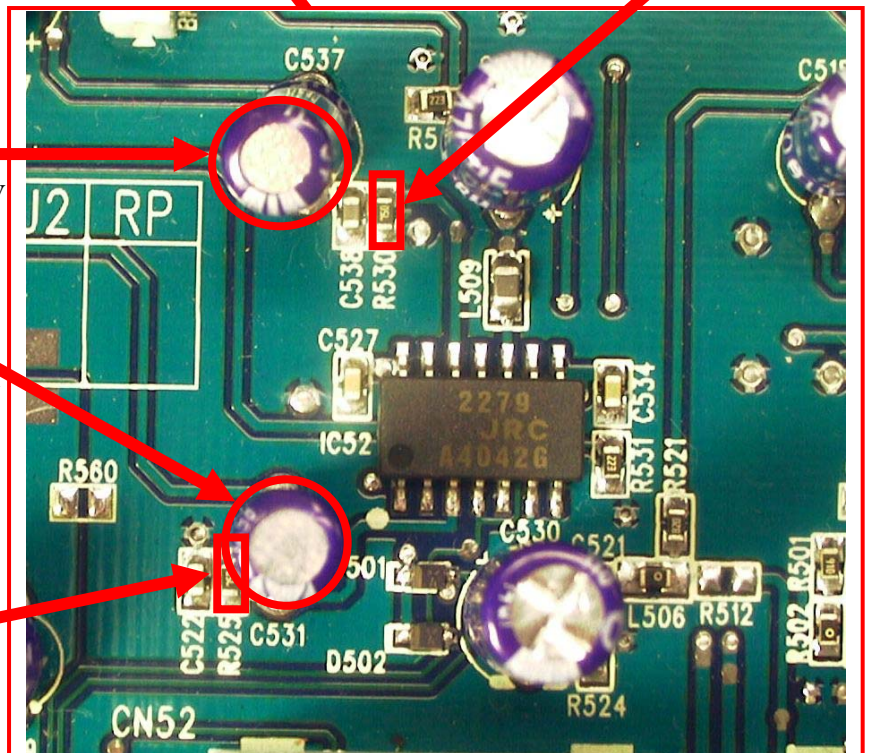


Remove **R530**

C537
100uF/16V is changed to 33uF/16V

C531
100uF/16V is changed to 33uF/16V

Remove **R525**



Approved by **N.Sensui**

Written by **S.NAGAO**

MAIN PCB Pattern side

